



PanelPiedra®

CEMENT®
Collection

Product Finishes

Technical Specifications

Color Range

**A S K F O R A
Q U O T E**

I would like a quote or more
information about this product

+34 941 181 091

info@panel piedra.com

PanelPiedra®

Polígono Industrial Municipal
Vial Transversal 2
31500 TUDELA (NAVARRA) SPAIN
www.panel piedra.com



CEMENT Product Finishes

The lightest panel in the market.
Easy and simple installation.
Quick installation system.
Cost savings in labor.
Perfect finish.
Does not require maintenance
Excellent soundproof qualities.
Good thermal insulation and anti-humidity.
Excellent flame retardant properties.
Excellent water-repellent,
No mutation to heat, freeze and defrost.
Not permeable.
Minimum abrasion.
High resistance to most chemicals.
Elegant combinations of materials and designs.
Ease of transport and handling.

Our ongoing commitment to technological research allowed us to develop a cutting edge product within a constantly evolving industry, as it is the world of decoration and design.

We offer the best aesthetic solutions for the latest trends in interior design and, increasingly iconoclastic combination of shapes, colors and materials.

Our patented manufacturing systems allow us to faithfully reproduce textures and colors of stones, bricks and beams. The easy installation, strength and high quality of our products, makes them highly demanded by professionals.

The use of "Panel Stone" products allow customers to create atmospheres that combine elegance, quality and design.

PR: Polyurethane and Stone Panel.

Panel composed of a layer of approximately 4 mm of crushed marble stone and a layer of high density injected polyurethane.

These components makes it very resistant to all kinds of weather conditions (rain, sun, frost, fog, salt, etc.). Suitable for indoors and outdoors installations. Excellent thermal, acoustic and anti-humidity characteristics.

HD®: High Definition Panel.

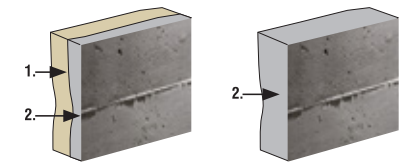
HD® is a highly innovative panel for coating all types of walls and ceilings. It is made out of more than 16 types of mineral and chemical charges (ie: stone, marble, silica, silicates, etc.). This composition makes the panel suitable to exteriors, resistant to fire and all kind of weather. Also, it has great resistance to abrasion and chemicals. Its low weight and large size makes the installation very quick and easy. Suitable for public places and areas of high traffic of people, facades, large buildings, places with high humidity (ie: saunas), etc.

Excellent fire retardant, water repellent, resistant to heat, freeze and defrost. Its zero percent water absorption ensures a complete sealing. High resistance to most chemicals products and low abrasive wear. All these characteristics make HD® panel a high quality material

We reserve the right to change models, colours, sizes and packaging without prior notice. All mentioned weights and dimensions are in cm and displayed as accurately as possible but can differ up to 2% by expansion and shrinkage during production. The photographs in this brochure are created on project locations and in studios, some even might be animations. Differences in exposure and printing on paper may cause products and colours looking different than in reality.

PR: Polyurethane and Stone Panel **HD: High Definition Panel**

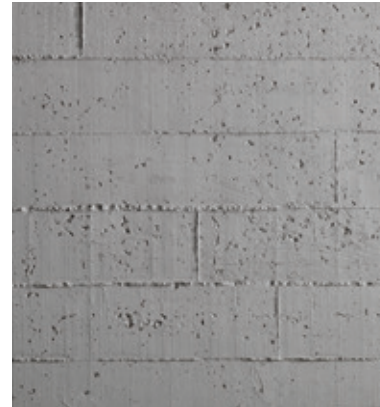
1. Polyurethane
2. Stone



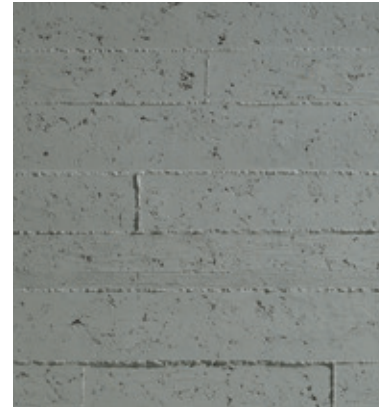




Concrete Panel Geométrico



Concrete Panel Tabla



Concrete Panel Tabla XL



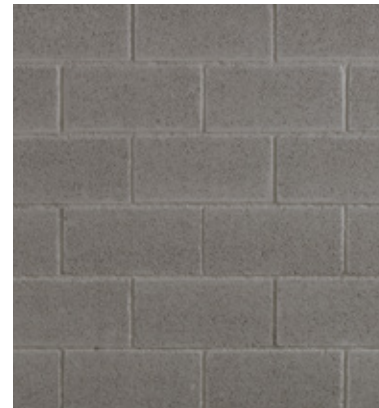
Concrete Panel Vintage



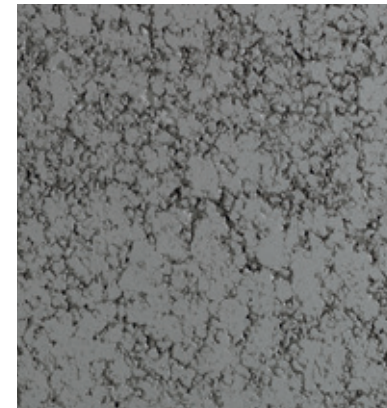
Concrete Panel Hexágono



Concrete Panel Factory



Concrete Panel Bloque



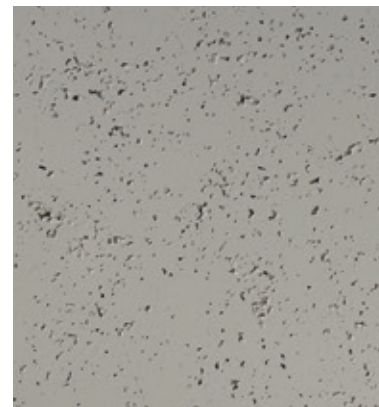
Concrete Panel Tosco



Concrete Panel Encofrado



Concrete Panel Cemento



Concrete Panel Hormigón

GEOMÉTRICO

950-1

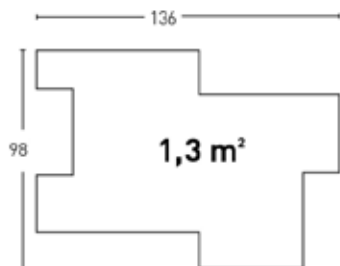
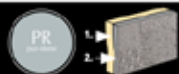
E Gris
EN Grey
FR Gris
DE Grau
I Grigio
NL Grijs

950-2

E Gris
EN Grey
FR Gris
DE Grau
I Grigio
NL Grijs

950-3

E Gris
EN Grey
FR Gris
DE Grau
I Grigio
NL Grijs



COD.



| | | | | | | | |
|----------|----------|----------|--|---------------|-----|--|--|
| PR-950-1 | ● MSA-10 | ● PTX-64 | | KIT-4 o KIT-5 | 7-8 | | |
| PR-950-2 | ● MSA-10 | ● PTX-64 | | KIT-4 o KIT-5 | 7-8 | | |
| PR-950-3 | ● MSA-10 | ● PTX-64 | | KIT-4 o KIT-5 | 7-8 | | |

* Necesario - Necessary - Nécessaire - Erforderlich - Necessario - Noodzakelijk

* Consult delivery date

GEOMETRICO Color Range



950-1

- E** Gris
- EN** Grey
- FR** Gris
- DE** Grau
- I** Grigio
- NL** Grijs



950-2

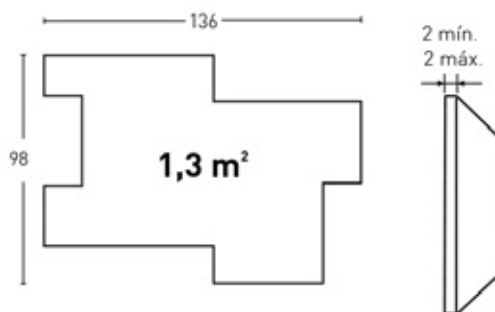
- E** Gris
- EN** Grey
- FR** Gris
- DE** Grau
- I** Grigio
- NL** Grijs



950-3


- E** Gris
- EN** Grey
- FR** Gris
- DE** Grau
- I** Grigio
- NL** Grijs

PR 



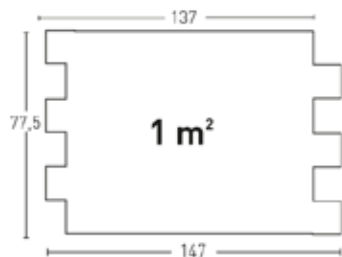
MODELO PANEL CEMENTO TABLA

FICHA TÉCNICA



930

- E** Tabla
- EN** Table
- FR** Planche
- DE** Brett
- I** Tavola
- NL** Tafel



| COD. | | | | | | | | | | |
|--------|--------|------------|---------------|--|--|-----|--|--|---|----|
| PR-930 | MSA-10 | PTX-64-400 | KIT-4 o KIT-5 | | | 7-8 | | | 4 | 48 |

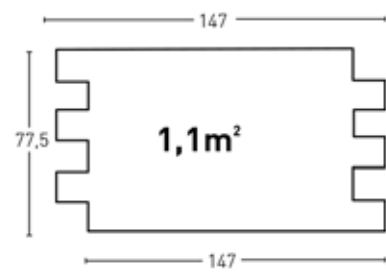
• Necesario - Necessary - Nécessaire - Erforderlich - Necessario - Noodzakelijk

TABLA Color Range



930

- E** Gris
- EN** Grey
- FR** Gris
- DE** Grau
- I** Grigio
- NL** Grijs



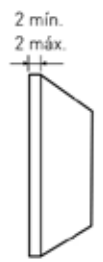
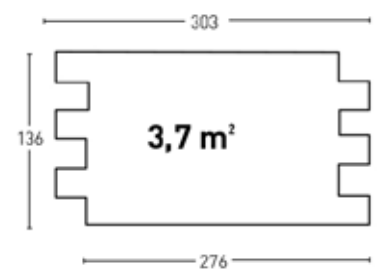
2mín.
2 máx.



TABLA XL

9300

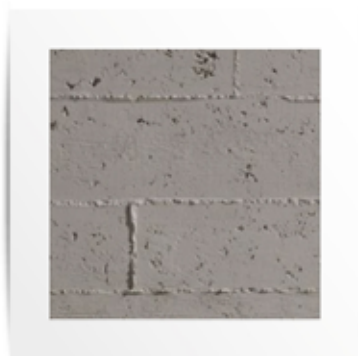
- E** Gris
- EN** Grey
- FR** Gris
- DE** Grau
- I** Grigio
- NL** Grijs



| COD. | | | | | | | | | |
|---------|----------|----------|--|---------------|--|-----|--|---|---|
| PR-9300 | ● MSA-10 | ● PTX-64 | | KIT-4 o KIT-5 | | 6-7 | | X | X |

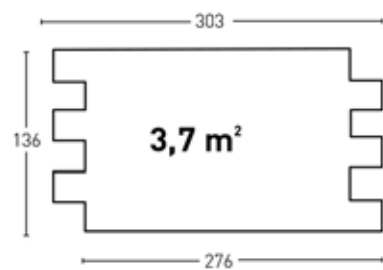
* Necesario - Necessary - Nécessaire Erforderlich - Necessario - Noodzakelijk

TABLA XL Color Range



9300

- E** Gris
- EN** Grey
- FR** Gris
- DE** Grau
- I** Grigio
- NL** Grijs



2 mín.
2 máx.



VINTAGE

940-1

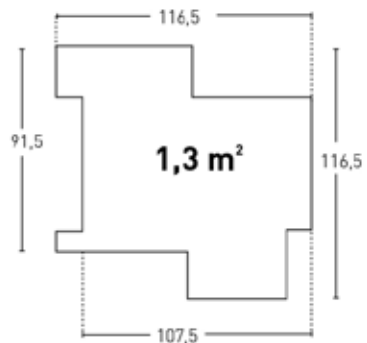
E Gris
EN Grey
FR Gris
DE Grau
I Grigio
NL Grijs

940-2

E Gris
EN Grey
FR Gris
DE Grau
I Grigio
NL Grijs

940-3

E Gris
EN Grey
FR Gris
DE Grau
I Grigio
NL Grijs



| COD. | | | | | | | | | | |
|----------|----------|----------|--|--|--|---------------|-----|--|--|--|
| PR-940-1 | ● MSA-10 | ● PTX-64 | | | | KIT-4 o KIT-5 | 6-7 | | | |
| PR-940-2 | ● MSA-10 | ● PTX-64 | | | | KIT-4 o KIT-5 | 6-7 | | | |
| PR-940-3 | ● MSA-10 | ● PTX-64 | | | | KIT-4 o KIT-5 | 6-7 | | | |

• Necesario - Necessary - Nécessaire Erforderlich - Necessario - Noodzakelijk

* Consult delivery date

VINTAGE Color Range



940-1

E Gris
EN Grey
FR Gris
DE Grau
I Grigio
NL Grijs

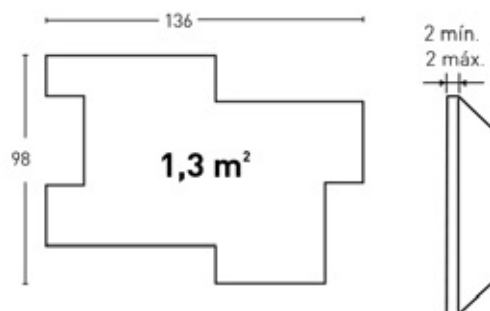
940-2

E Gris
EN Grey
FR Gris
DE Grau
I Grigio
NL Grijs

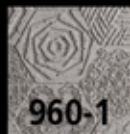
940-3

E Gris
EN Grey
FR Gris
DE Grau
I Grigio
NL Grijs

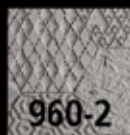
PR 



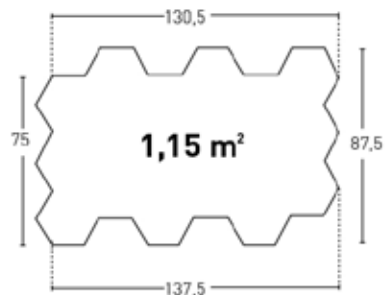
HEXAGONAL



E Gris
EN Grey
FR Gris
DE Grau
I Grigio
NL Grijs



E Gris
EN Grey
FR Gris
DE Grau
I Grigio
NL Grijs



COD.



| | | | | | | | |
|----------|----------|----------|--|---------------|-----|--|--|
| PR-960-1 | ● MSA-10 | ● PTX-64 | | KIT-4 o KIT-5 | 6-7 | | |
| PR-960-2 | ● MSA-10 | ● PTX-64 | | KIT-4 o KIT-5 | 6-7 | | |

• Necesario - Necessary - Nécessaire Erforderlich - Necessario - Noodzakelijk

* Consult delivery date

HEXAGONAL Color Range

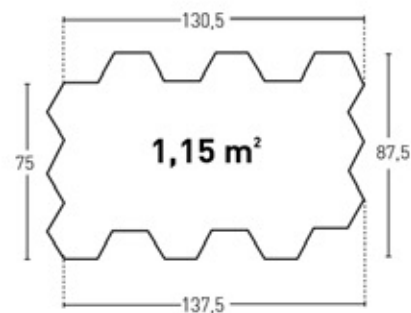


960-1

- E** Gris
- EN** Grey
- FR** Gris
- DE** Grau
- I** Grigio
- NL** Grijs

960-2

- E** Gris
- EN** Grey
- FR** Gris
- DE** Grau
- I** Grigio
- NL** Grijs



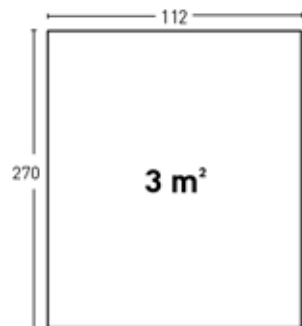
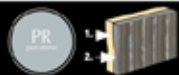
2 mín.
2 máx.



FACTORY



- E** Gris
- EN** Grey
- FR** Gris
- DE** Grau
- I** Grigio
- NL** Grijs



| COD. | | | | | | | | | | |
|--------|----------|----------|--|---------------|--|--|-------|--|--|--|
| PR-980 | ● MSA-10 | ● PTX-64 | | KIT-4 o KIT-5 | | | 14-15 | | | |

* Necesario - Necessary - Nécessaire Erforderlich - Necessario - Noodzakelijk

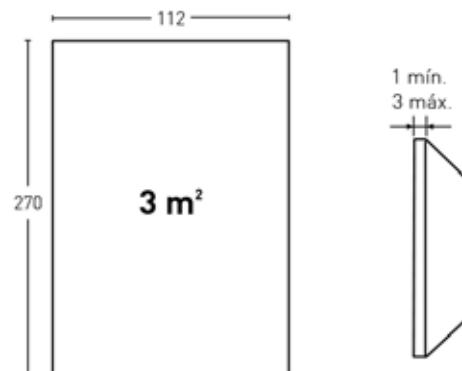
* Consult delivery date

FACTORY Color Range



980

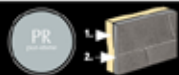
- E** Gris
- EN** Grey
- FR** Gris
- DE** Grau
- I** Grigio
- NL** Grijs



BLOQUE



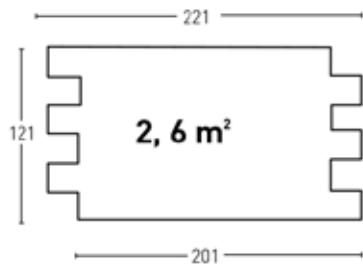
E Gris
EN Grey
FR Gris
DE Grau
I Grigio
NL Grijs



COD.



| | | | | | | | |
|--------|----------|----------|--|---------------|-------|--|---|
| PR-970 | ● MSA-10 | ● PTX-64 | | KIT-4 o KIT-5 | 14-15 | | T |
|--------|----------|----------|--|---------------|-------|--|---|



* Necesario - Necessary - Nécessaire Erforderlich - Necessario - Noodzakelijk

2 mín.
2 máx.



* Consult delivery date

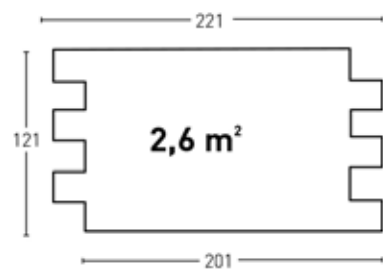
BLOQUE Color Range



970

- E** Gris
- EN** Grey
- FR** Gris
- DE** Grau
- I** Grigio
- NL** Grijs

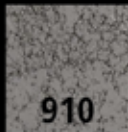
PR 



2 mín.
2 máx.

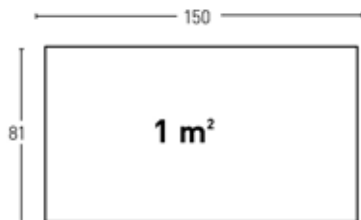


TOSCO



910

- E** Gris
- EN** Grey
- FR** Gris
- DE** Grau
- I** Grigio
- NL** Grijs



2 mín.
2 máx.



COD.

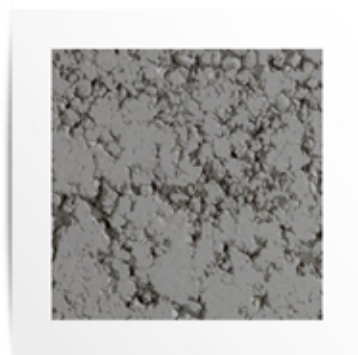


| | | | | | | | |
|--------|----------|----------|--|---------------|-----|--|--|
| PR-910 | ● MSA-10 | ● PTX-64 | | KIT-4 o KIT-5 | 6-7 | | |
|--------|----------|----------|--|---------------|-----|--|--|

* Necesario - Necessary - Nécessaire - Erforderlich - Necessario - Noodzakelijk

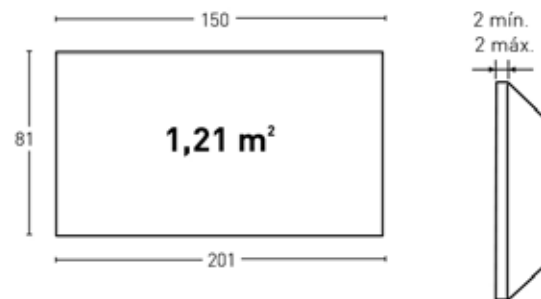
* Consult delivery date

TOSCO Color Range



910

- E** Gris
- EN** Grey
- FR** Gris
- DE** Grau
- I** Grigio
- NL** Grijs



ENCOFRADO

| | | |
|-----|----|------------|
| 320 | E | Gris |
| | EN | Grey |
| | FR | Gris |
| | DE | Grau |
| 321 | I | Grigio |
| | NL | Grijs |
| | E | Oxido |
| | EN | Rusty |
| 322 | FR | Oxidé |
| | DE | Rost |
| | I | Ossido |
| | NL | Roest |
| | E | Antracita |
| | EN | Anthracite |
| | FR | Anthracite |
| | DE | Anthrazit |
| | I | Antracite |
| | NL | Zwart |

PR

95,5

0,91 m²

95,5

2 mín.

3 máx.

HD

95,5

0,91 m²

95,5

| COD. | | | | | | | | |
|--------|----------|----------|------------------|---------------|-----|---------------|---|----|
| PR-920 | ● MSA-10 | ● PTX-01 | ● PTE-22 | KIT-4 o KIT-5 | 5-6 | 8435068949206 | 6 | 72 |
| PR-921 | ● MSA-60 | ● PTX-24 | ● PTE-28 ○ BR-01 | KIT-4 o KIT-5 | 5-6 | 8435068949213 | 6 | 72 |
| PR-922 | ● MSA-60 | ● PTX-19 | | KIT-4 o KIT-5 | 5-6 | 8435068949220 | 6 | 72 |

* Necesario - Necessary - Nécessaire - Erforderlich - Necessario - Noodzakelijk

| COD. | | | | | | | | |
|--------|----------|----------|------------------|---------------|----|---------------|----|----|
| HD-920 | ● MSA-10 | ● PTX-01 | ● PTE-22 | KIT-4 o KIT-5 | 24 | 8435068919209 | 25 | 25 |
| HD-921 | ● MSA-60 | ● PTX-24 | ● PTE-28 ○ BR-01 | KIT-4 o KIT-5 | 24 | 8435068919216 | 25 | 25 |
| HD-922 | ● MSA-60 | ● PTX-19 | | KIT-4 o KIT-5 | 24 | 8435068919223 | 25 | 25 |

* Necesario - Necessary - Nécessaire - Erforderlich - Necessario - Noodzakelijk

ENCOFRADO Color Range



920

E Gris
EN Grey
FR Gris
DE Grau
I Grigio
NL Grijs



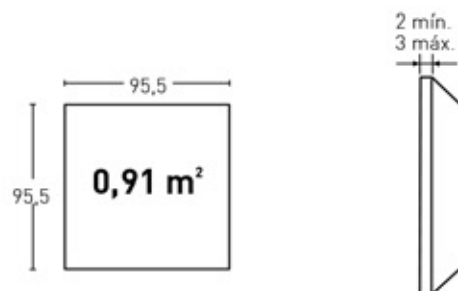
921

E Oxido
EN Rusty
FR Oxidé
DE Rost
I Ossido
NL Roest



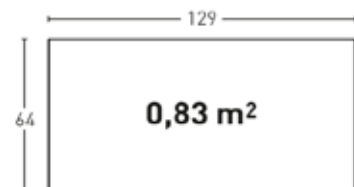
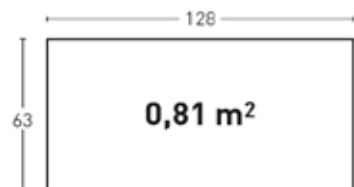
922

E Antracita
EN Anthracite
FR Anthracite
DE Anthrazit
I Antracite
NL Zwart



PANEL DE PIEDRA - STONE PANEL CEMENTO

| | | |
|-----|----|------------|
| 320 | E | Gris |
| | EN | Grey |
| | FR | Gris |
| | DE | Grau |
| 321 | I | Grigio |
| | NL | Grijs |
| | E | Oxido |
| | EN | Rusty |
| 322 | FR | Oxidé |
| | DE | Rost |
| | I | Ossido |
| | NL | Roest |
| | E | Antracita |
| | EN | Anthracite |
| | FR | Anthracite |
| | DE | Anthrazit |
| | I | Antracite |
| | NL | Zwart |



| COD. | | | | | | | | | | | | | | | | | | | |
|--------|--------|--------|--------|---------------|-----|---------------|---|----|--|--|--|--|--|--|--|--|--|--|--|
| PR-320 | MSA-10 | PTX-01 | PTE-22 | KIT-4 o KIT-5 | 5-6 | 8435068943204 | 6 | 72 | | | | | | | | | | | |
| PR-321 | MSA-60 | PTX-24 | PTE-28 | KIT-4 o KIT-5 | 5-6 | 8435068943211 | 6 | 72 | | | | | | | | | | | |
| PR-322 | MSA-60 | PTX-19 | | KIT-4 o KIT-5 | 5-6 | 8435068943228 | 6 | 72 | | | | | | | | | | | |

★ Necesario - Necessary - Nécessaire - Erforderlich - Necessario - Noodzakelijk

| COD. | | | | | | | | | | | | | | | | | | | |
|--------|--------|--------|--------|---------------|----|---------------|----|----|--|--|--|--|--|--|--|--|--|--|--|
| HD-320 | MSA-10 | PTX-01 | PTE-22 | KIT-4 o KIT-5 | 24 | 8435068913204 | 25 | 25 | | | | | | | | | | | |
| HD-321 | MSA-60 | PTX-24 | PTE-28 | KIT-4 o KIT-5 | 24 | 8435068913211 | 25 | 25 | | | | | | | | | | | |
| HD-322 | MSA-60 | PTX-19 | | KIT-4 o KIT-5 | 24 | 8435068913228 | 25 | 25 | | | | | | | | | | | |

★ Necesario - Necessary - Nécessaire - Erforderlich - Necessario - Noodzakelijk

CEMENTO Color Range



320

- E Gris
- EN Grey
- FR Gris
- DE Grau
- I Grigio
- NL Grijs



321

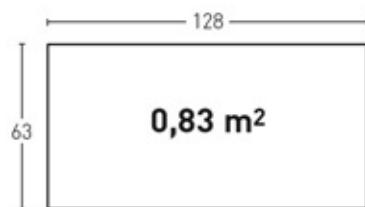
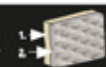
- E Oxido
- EN Rusty
- FR Oxydé
- DE Rost
- I Ossido
- NL Roest



322

- E Antracita
- EN Anthracite
- FR Anthracite
- DE Anthrazit
- I Antracite
- NL Zwart

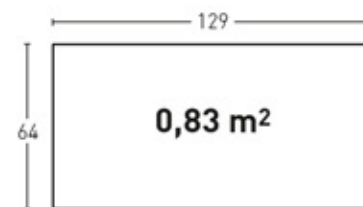
PR



2 min.
2 max.



HD



2 min.
2 max.



PANEL DE PIEDRA - STONE PANEL HORMIGON



326

E Gris
EN Grey
FR Gris
DE Grau
I Grigio
NL Grijs



327

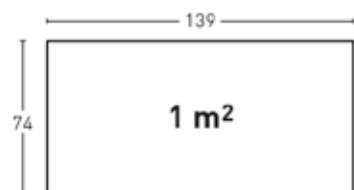
E Oxido
EN Rusty
FR Oxydé
DE Rost
I Ossido
NL Roest



325

E Antracita
EN Anthracite
FR Anthracite
DE Anthrazit
I Antracite
NL Zwart

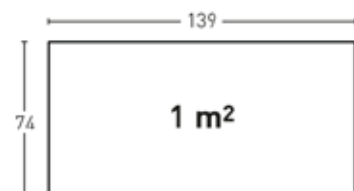
PR



2 min.
2 max.



HD



1 min.
1 max.



COD.



| | | | | | | | | |
|--------|----------|----------|----------|---------------|-----|---------------|---|----|
| PR-326 | ● MSA-10 | ● PTX-01 | ● PTE-22 | KIT-4 o KIT-5 | 5-6 | 8435068943204 | 6 | 72 |
| PR-327 | ● MSA-60 | ● PTX-24 | ● PTE-28 | KIT-4 o KIT-5 | 5-6 | 8435068943211 | 6 | 72 |
| PR-325 | ● MSA-60 | ● PTX-19 | | KIT-4 o KIT-5 | 5-6 | 8435068943228 | 6 | 72 |

★ Necesario - Necessary - Nécessaire - Erforderlich - Necessario - Noodzakelijk

COD.



| | | | | | | | | |
|--------|----------|----------|----------|---------------|----|---------------|----|----|
| HD-326 | ● MSA-10 | ● PTX-01 | ● PTE-22 | KIT-4 o KIT-5 | 25 | 8435068913269 | 25 | 25 |
| HD-327 | ● MSA-60 | ● PTX-24 | ● PTE-28 | KIT-4 o KIT-5 | 25 | 8435068913276 | 25 | 25 |
| HD-325 | ● MSA-60 | ● PTX-19 | | KIT-4 o KIT-5 | 25 | 8435068913252 | 25 | 25 |

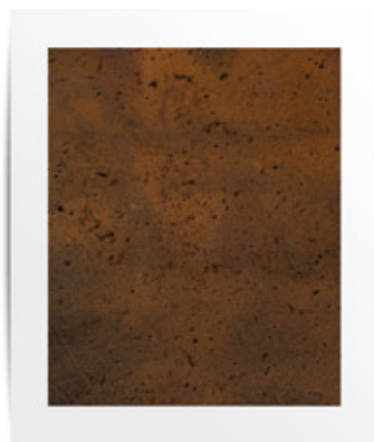
★ Necesario - Necessary - Nécessaire - Erforderlich - Necessario - Noodzakelijk

HORMIGON Color Range



326

- E Gris
- EN Grey
- FR Gris
- DE Grau
- I Grigio
- NL Grijs



327

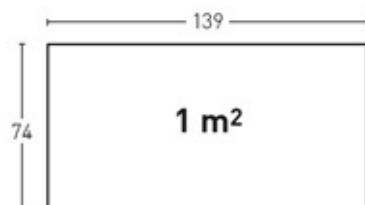
- E Oxido
- EN Rusty
- FR Oxydé
- DE Rost
- I Ossido
- NL Roest



325

- E Antracita
- EN Anthracite
- FR Anthracite
- DE Anthrazit
- I Antracite
- NL Zwart

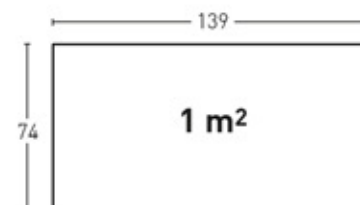
PR



2 min.
2 max.



HD



1 min.
1 max.



PanelPiedra®

- E** Panel Piedra® se reserva el derecho a cambiar los modelos, colores, tamaños, envases y cajas sin previo aviso. Todos los pesos y dimensiones mencionadas son en cm y se muestran con la mayor precisión posible, pero pueden diferir hasta 2% por la expansión y la contracción durante la producción. Las fotografías de este Catálogo se crean en lugares del proyecto y en estudios, algunos incluso podrían ser animaciones. Las diferencias en la exposición de la luz y la impresión en papel pueden causar que los productos y los colores se vea diferente que en la realidad.
- I** Panel Piedra si riserva il diritto di modificare senza preavviso modelli, dimensioni, confezione e imballaggio senza alcun preavviso. Tutti i pesi e le misure sono riportate in centimetri e con la maggiore precisione possibile, tuttavia però possono differire di un 2% a causa della espansione e contrazione avvenute nei prodotti durante le fasi di fabbricazione. Tutte le fotografie di questo Catalogo sono scattate in loco o in studio. Alcune di esse potrebbero essere ricostruzioni fotografiche. Le differenti esposizioni alla luce e la stampa su carta potrebbero causare delle differenze nei prodotti e nei colori rispetto alla realtà. Non verranno pertanto accettati reclami con tali motivazioni.
- EN** We reserve the right to change models, colours, sizes and packaging without prior notice. All mentioned weights and dimensions are in cm and displayed as accurately as possible but can differ up to 2% by expansion and shrinkage during production. The photographs in this brochure are created on project locations and in studios, some even might be animations. Differences in exposure and printing on paper may cause products and colours looking different than in reality.
- FR** Nous nous réservons le droit de modifier les modèles, de couleurs, de tailles et d'emballage sans avis préalable. Tous les poids et les dimensions mentionnés sont en cm et affichent aussi exactement que possible mais peuvent varier de 2 % par l'expansion et la contraction pendant la production. Les photos dans cette brochure sont créées en studio, sur des projets déjà réalisés ou sont des animations. Ils peuvent provoquer des différences de teinte et de l'impression. Sur papier les modèles et les teintes peuvent sembler différente que dans la réalité.
- DE** Wir behalten uns das Recht, Modelle, Farben, Größen und Verpackungen ohne vorherige Ankündigung zu ändern. Alle genannten Gewichte und Maße sind in cm und so genau wie möglich angezeigt, können aber bis zu 2 % durch Expansion und Schrumpfung während der Produktion abweichen. Die Fotografien in dieser Broschüre werden auf Standorte, Studios und als Computer Animation erstellt. Unterschiede in Licht und Druck auf Papier können dazu führen, dass Farben und Produkte anders erscheinen als in Wirklichkeit.
- NL** Wij behouden ons het recht voor om modellen, kleuren, afmetingen en verpakkingen te wijzigen zonder voorafgaande melding. Alle genoemde afmetingen en gewichten zijn in cm en zo nauwkeurig mogelijk weergegeven, maar kunnen door uitzetting en krimp tijdens productie tot 2% afwijken. De foto's in deze brochure zijn gemaakt op projectlocaties, in studio's en als computeranimatie. Door verschillen in belichting en druk op papier kunnen kleuren en producten anders lijken dan in werkelijkheid.