

Make it with Paper

richlite.



richlite.com
@richlite



#MakeitwithPaper




Table of Contents

- 04** What is Richlite
- 08** How it's Made
- 12** Colors
- 16** Surface Options
- 18** Features + Benefits
- 30** Project Showcase

Richlite is paper

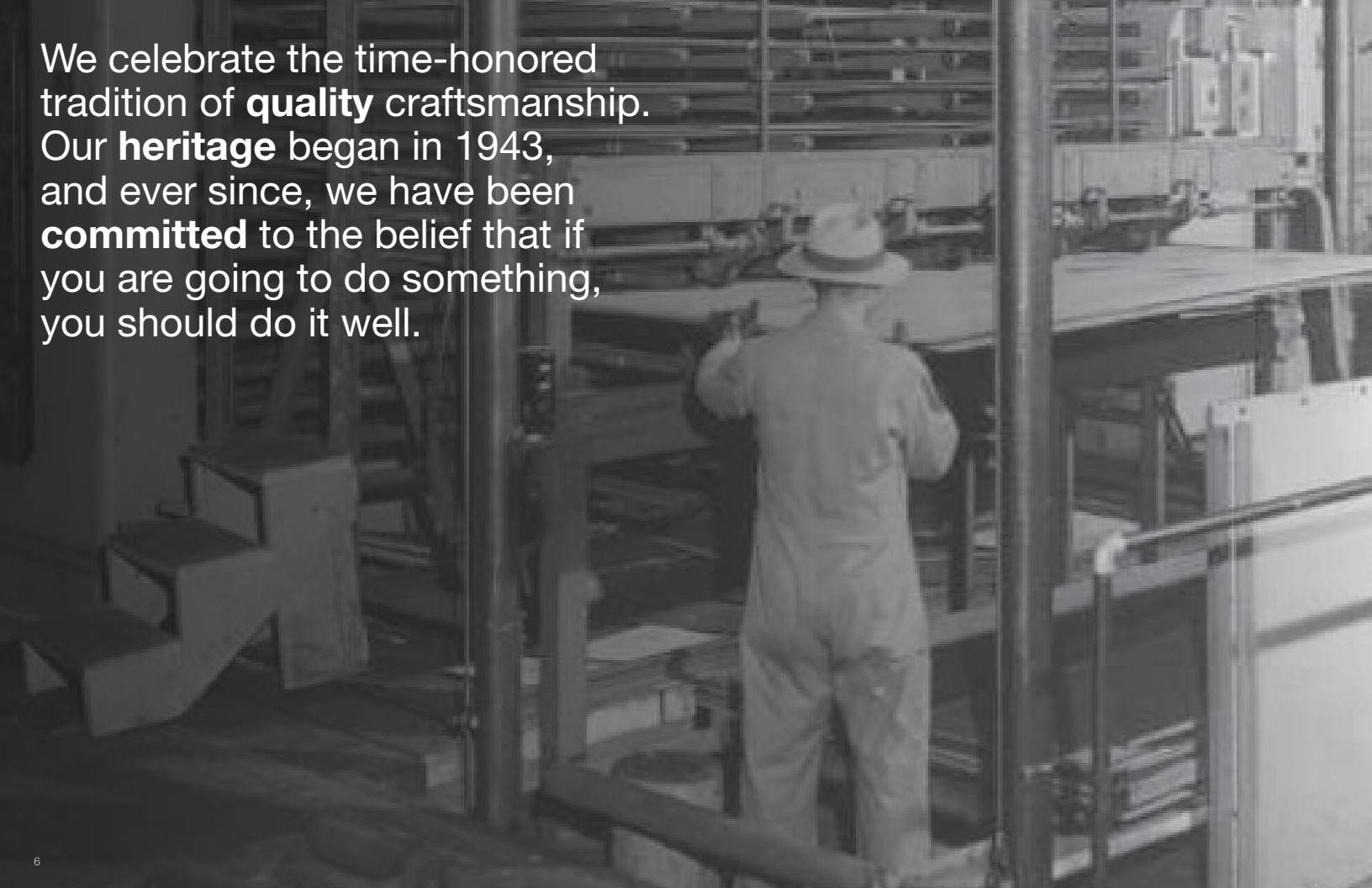
Richlite is an incredibly durable, sustainable and versatile material made from paper. Originally developed over 70 years ago for industrial tooling and pattern making, Richlite has expanded into diverse industries such as food service, aerospace, action sports, marine, musical instruments, architecture and many more.

Our high grade custom FSC® Certified paper is infused with a thermosetting resin before being laid up by hand and pressed into a solid panel.

Richlite is unlike stone, plastic or solid surface. It fabricates similar to an incredibly dense hardwood and can be milled, sanded, routed and joined.

In addition to being easily machined, the innovative surface material's mottled appearance, honed look and leathery feel complement a range of interior and exterior applications; such as furniture, cladding, skateparks, signage, foundry patterns, tooling, bar tops, retail displays, food prep surfaces and consumer products.

We celebrate the time-honored tradition of **quality** craftsmanship. Our **heritage** began in 1943, and ever since, we have been **committed** to the belief that if you are going to do something, you should do it well.





How it's Made

Made from many layers of high quality engineered paper, Richlite's surface texture comes from the natural variation in the way fibers lay within the paper. Rolls of paper are infused with a thermosetting resin before they are cut to length and laid up by hand. Each sheet is carefully

stacked, alternating the direction of paper for the ultimate balance and stability. The stacks are pressed under even heat and pressure, which bonds the layers of paper together and cures the product. The panels are then slowly cooled to produce a solid, stable sheet material.





Colors

Richlite's color comes from a combination of the paper color and the deep amber tone of the resin. Like wood, the colors develop a natural patina as they age. Today, Richlite offers multiple color collections to suit residential, commercial and industrial projects.



NORTHWEST COLLECTION

Available in colors whose names reflect natural landmarks near the company headquarters in the Pacific Northwest.



CASCADE COLLECTION

Inspired by the Cascade Range, this collection is a 'layered line' including bamboo-embedded Stratum.

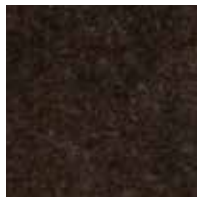


HERITAGE COLLECTION

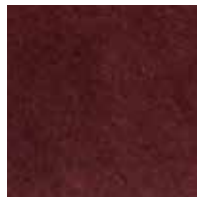
Richlite's original color, Natural, and the milestone products of Slate and r50 represent the company's rich history.



NORTHWEST COLLECTION



Chocolate Glacier ♻️



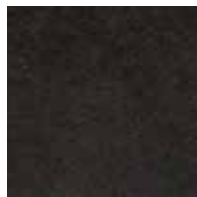
Redstone ♻️



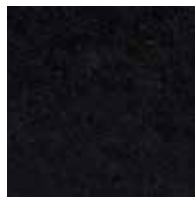
Browns Point ♻️



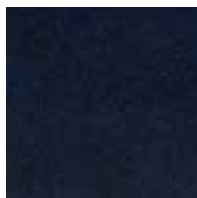
Maple Valley (r100) ♻️



Grays Harbor ♻️



Black Diamond ♻️ 🌱



Blue Canyon ♻️

Richlite can be pressed from
1/4" (6mm) to 3" (75mm) thick.

Panel sizes range from
48" x 96" (2440mm x 1220mm) to
60" x 144" (3660mm x 1525mm).



Contains 100% Recycled Paper



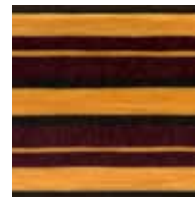
Also Available in Rapidly Renewable Paper



CASCADE COLLECTION



Little Tahoma ♻️



Rainier ♻️



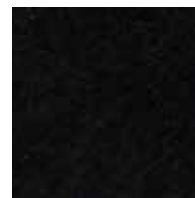
Stratum ♻️ 🌱



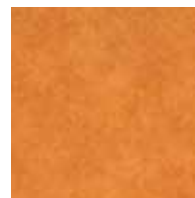
HERITAGE COLLECTION



r50 ♻️ Contains 50% Recycled Paper



Slate



Natural

The Heritage Collection is NSF
approved and used as Skatelite.



Skatelite

All Richlite products are:




Surface Options

Richlite is shipped from the factory with a 'mill surface'. Some applications will require an applied surface process from a fabricator for the best long-term performance, both visually and functionally*. The three surface options are mill, leathered and honed.

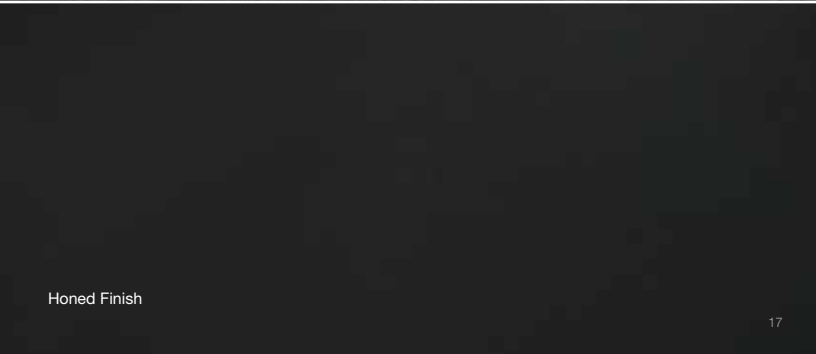
*Please contact a sales representative to discuss the appropriate colors and applications for exterior use.

A close-up photograph of a dark, textured surface with a fine, irregular grain, characteristic of a mill finish.

Mill Finish

A close-up photograph of a dark, textured surface with a more pronounced, irregular grain than the mill finish, characteristic of a leathered finish.

Leathered Finish


A close-up photograph of a dark, textured surface with a smooth, uniform grain, characteristic of a honed finish.

Honed Finish

Features + Benefits

Heat and water resistant, the paper composite material can withstand everything from food preparation environments to the harsh outdoors. Whether selected for its unique look and feel, durability, sustainability, or the fact it is easily machined, Richlite outperforms and outlasts conventional materials.






Dense, consistent and without voids, Richlite is an ideal **machinable** material for drilling, tapping, tooling and complex patterns.

A modern, dark-colored cabin with a wooden deck and railing, nestled in a lush forest with tall grass and trees. The cabin has a large window and a door with a wooden frame. The surrounding environment is a dense forest with tall grass and trees, suggesting a sustainable and natural setting.

From 100% recycled products
to waste-to-energy (WE™)
technology, Richlite makes an
obvious **sustainable** choice.

High impact resistance,
deflective & flexural strength
and structural capabilities
make Richlite an extremely
durable material.





Richlite's distinctive look
and feel provides for a
unique **tactile** experience.



**Machinable
Sustainable
Durable
Tactile +
Versatile...**

Riverlands Avian Observatory

LOCATION **St. Louis, MO, USA**

ARCHITECT **St. Louis Graduate School of Architecture**

APPLICATION **Exterior Cladding**

COLOR **Chocolate Glacier + r100**

PHOTO **Intectural, Inc.**





Epicurean®

LOCATION Duluth, MN, USA

APPLICATION Pizza Peel

COLOR Natural

PHOTO Epicurean



Grow Anthology

LOCATION Olympia, WA, USA

APPLICATION Longboard Deck

COLOR Chocolate Glacier + r100 Custom Cascade

PHOTO Ben Russa



Hooters™

LOCATION Kirby, TX, USA

DESIGNER ASD

FABRICATOR Chris Wilhite Design

COLOR r100, r50, Chocolate Glacier + Custom Cascade

APPLICATION Bar Top

PHOTO Jonathan Irvin, Enigma Fotos



Danny Way's World Record Ramp

LOCATION **Alpine, CA, USA**

RAMP BUILDER **California RampWorks**

APPLICATION **Skate Ramp Surface**

COLOR **Natural**



an+ Sideboard

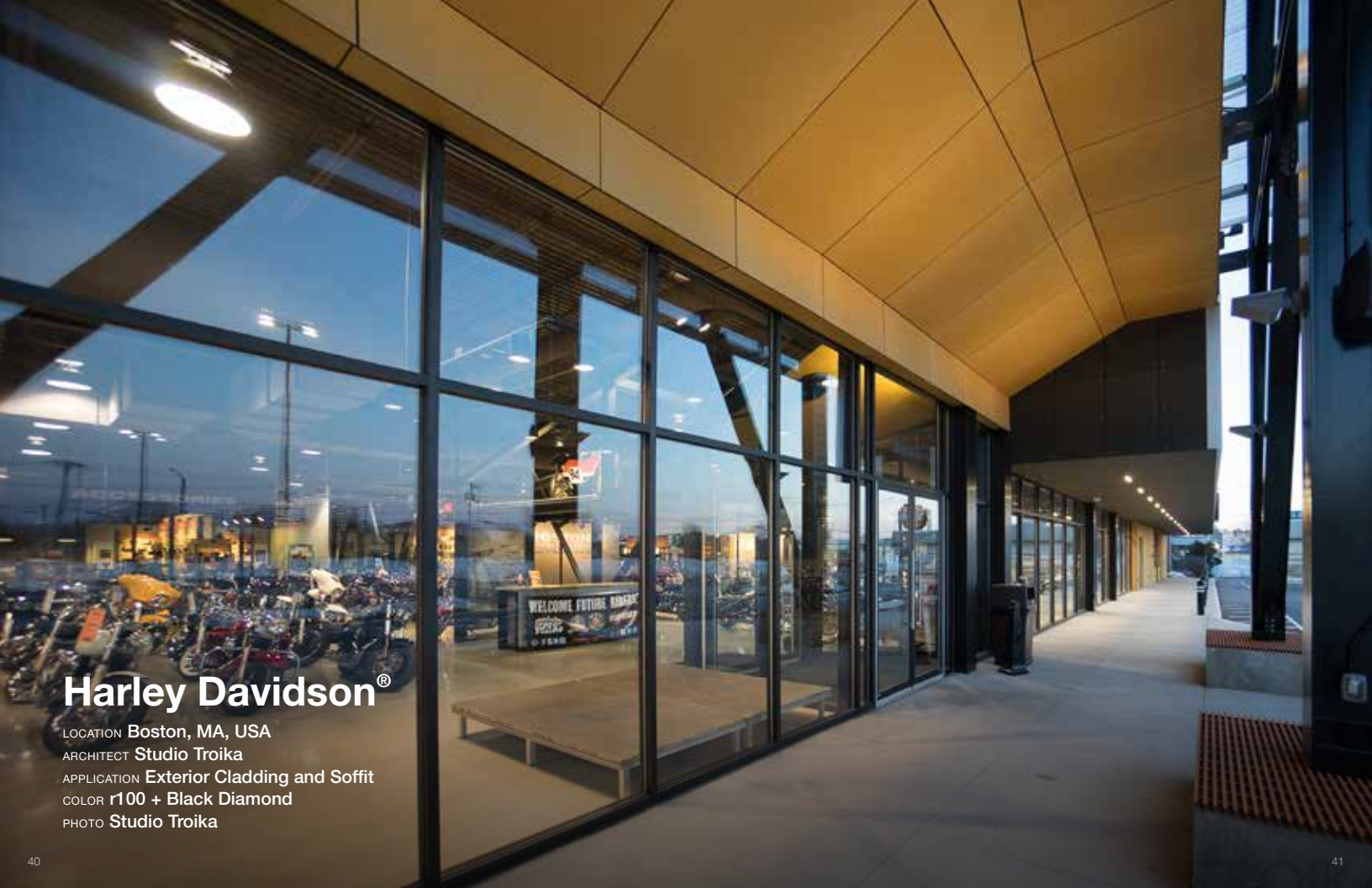
LOCATION Alpnach Dorf, Switzerland

DESIGNER Alpnach Norm-Schränkelmente AG

APPLICATION Furniture Surface

COLOR Black Diamond

PHOTO Foto Zumbrunn, Aarau



Harley Davidson®

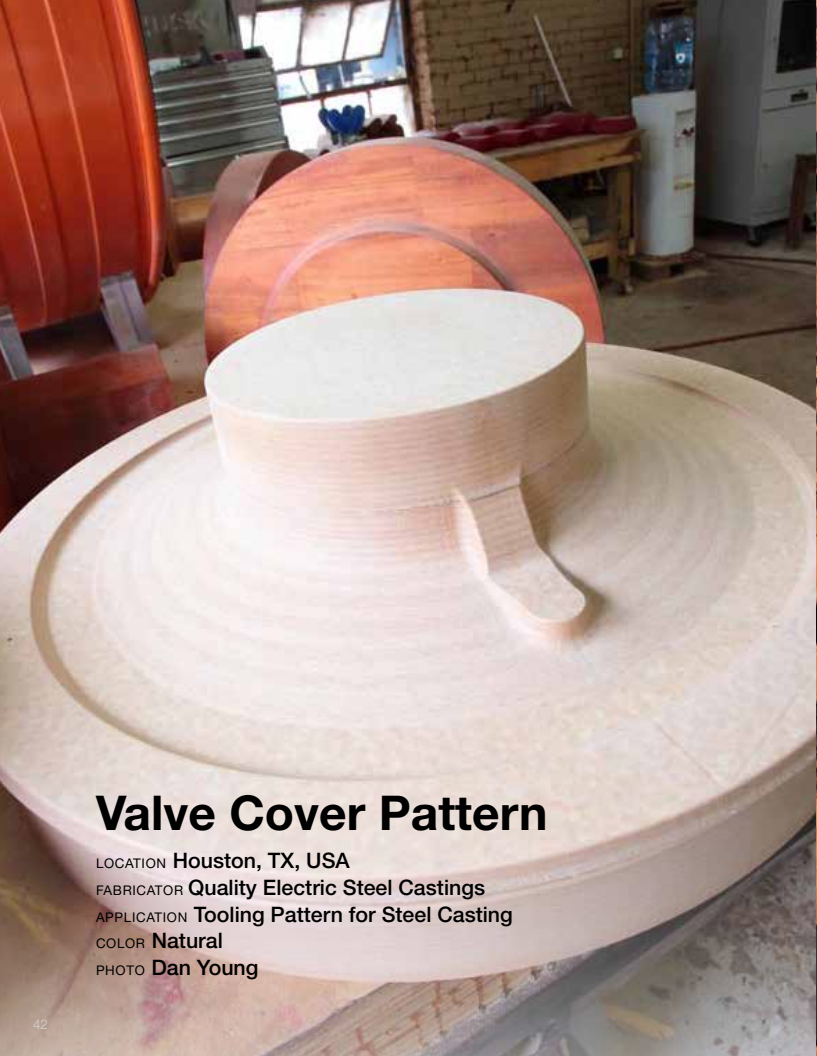
LOCATION **Boston, MA, USA**

ARCHITECT **Studio Troika**

APPLICATION **Exterior Cladding and Soffit**

COLOR **r100 + Black Diamond**

PHOTO **Studio Troika**



Valve Cover Pattern

LOCATION Houston, TX, USA

FABRICATOR Quality Electric Steel Castings

APPLICATION Tooling Pattern for Steel Casting

COLOR Natural

PHOTO Dan Young



Twig Case Co.™

LOCATION Minneapolis, MN, USA

APPLICATION Phone Case

COLOR Black Diamond + Bamboo Veneer

PHOTO Twig Case Co.

Red Bull®

LOCATION **Santa Monica, CA, USA**

ARCHITECT **HLW International**

APPLICATION **Surface Panels**

COLOR **r100**

PHOTO **Benny Chan, Fotoworks**



Natural History Museum

LOCATION Los Angeles, CA, USA

FABRICATOR Lexington

APPLICATION Display Bases

COLOR Chocolate Glacier

PHOTO Ryan Miller, Capture Imaging



Restaurant Fontana

LOCATION **Baar, Switzerland**

DESIGNER **Barmade AG**

APPLICATION **Tables**

COLOR **Chocolate Glacier + Browns Point**

PHOTO **Muther Markus**

Veuve Clicquot®

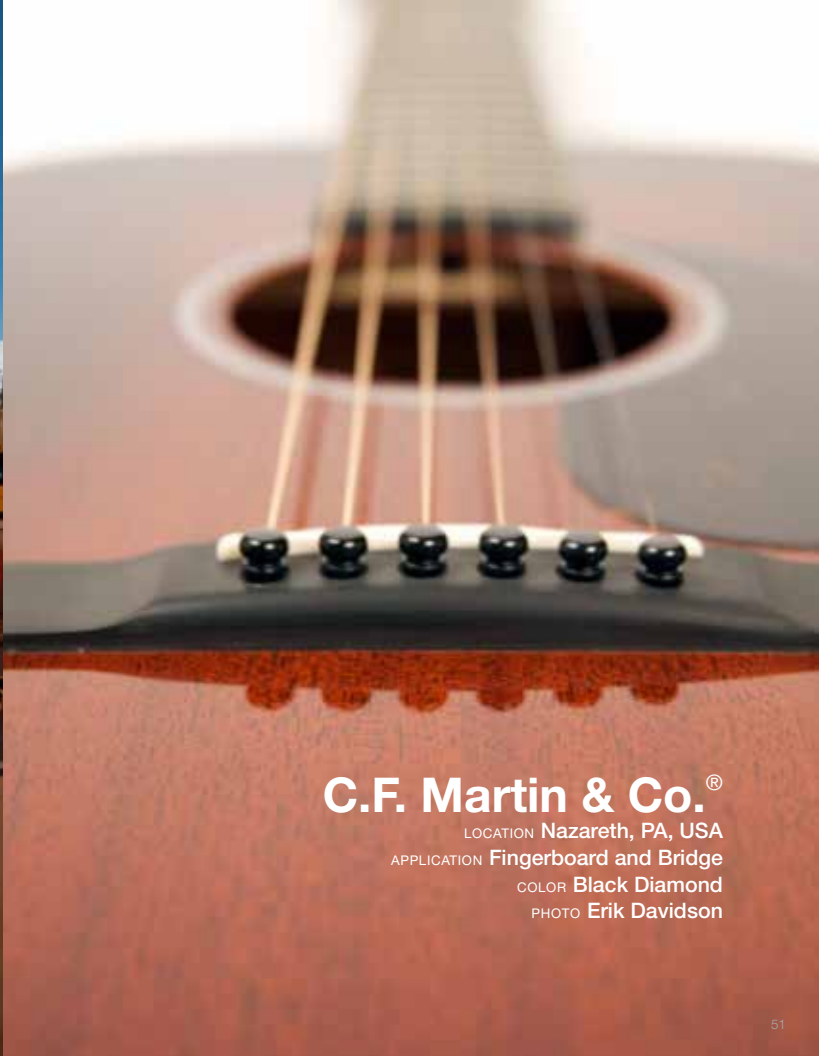
LOCATION Aspen, CO, USA

FABRICATOR The Public Works

APPLICATION Outdoor Bar Top

COLOR r50

PHOTO The Public Works



C.F. Martin & Co.®

LOCATION Nazareth, PA, USA

APPLICATION Fingerboard and Bridge

COLOR Black Diamond

PHOTO Erik Davidson

Gasser Schreinerei

LOCATION **Haldenstein, Switzerland**

ARCHITECT **Gasser Schreinerei AG**

APPLICATION **Exterior Cladding**

COLOR **Black Diamond**

PHOTO **Studer Handels AG**





Berkeley Residence

LOCATION **Berkeley Hills, CA, USA**

ARCHITECT **Regan Bice Architects**

APPLICATION **Exterior Cladding**

COLOR **Black Diamond**

PHOTO **Regan Bice Architects**



Brunner Küchen

LOCATION **Bettwil, Switzerland**

DESIGNER **Brunner Küchen AG**

APPLICATION **Cabinet Doors**

COLOR **Black Diamond**

PHOTO **Reto Brun, Reinach**

Tacoma Art Museum

LOCATION Tacoma, WA, USA

ARCHITECT Olson Kundig Architects

APPLICATION Exterior Cladding

COLOR Chocolate Glacier

PHOTO Brad Curran





Residential Kitchen

LOCATION **Minnesota, USA**

FABRICATOR **Norcraft Cabinetry**

APPLICATION **Countertops**

COLOR **Grays Harbor**

PHOTO **Intectural, Inc.**

Gibson® Guitar

LOCATION Nashville, TN, USA

APPLICATION Fingerboard

COLOR Black Diamond

PHOTO Erik Davidson



Trekboxx™

LOCATION Bodie, CA, USA

APPLICATION Work Surface

COLOR r100

PHOTO Trekboxx LLC





Chipotle Mexican Grill®

LOCATION **Paris, France**

ARCHITECT **Holmes Design Architecture + Chipotle Store Design Team**

APPLICATION **Benches, Chairs + Wall Panels**

COLOR **Black Diamond + r50**

PHOTO **Michel Cecconi**



Elie Tahari®

LOCATION **Madrid, Spain**

DESIGNER **Elie Tahari Store Design**

APPLICATION **Wall Panels**

COLOR **Black Diamond**

PHOTO **Elie Tahari Store Design**

The Retreat™

LOCATION Lopez Island, WA, USA

RAMP BUILDER California RampWorks

APPLICATION Skate Ramp Surface

COLOR Natural

PHOTO The Public Works





Bench Casting Pattern

LOCATION **Tacoma, WA, USA**

FABRICATOR **Woodland Pattern, Inc.**

APPLICATION **Pattern for Sand Molds**

COLOR **Natural**

PHOTO **Brad Curran**



The V House

LOCATION Isle of Wight, UK

ARCHITECT Lincoln Miles Architecture

APPLICATION Shelves, Exterior Paneling + Soffits

COLOR Black Diamond

PHOTO Julian Winslow



Tekstur

LOCATION **New York, NY, USA**
FABRICATOR **Eco Supply Center**
APPLICATION **Tekstur Decorative Panels**
COLOR **Black Diamond**
PHOTO **Eco Supply Center**



Tree x Office

LOCATION London, UK

ARCHITECT Tate Harmer

APPLICATION Structural Ribs

COLOR Black Diamond

PHOTO Daniel Sellam



Ashortwalk®

LOCATION Perranporth, UK

APPLICATION Printed Clock

COLOR r50

PHOTO Ashortwalk



Victorinox® Swiss Army®

LOCATION **Ibach, Switzerland**

MANUFACTURER **Victorinox + Epicurean**

APPLICATION **Knife Handle**

COLOR **r50**

PHOTO **Epicurean**

richlite.com
@richlite



#MakeitwithPaper

richlite.